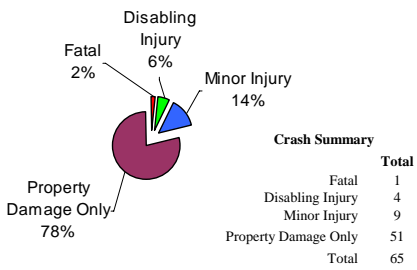


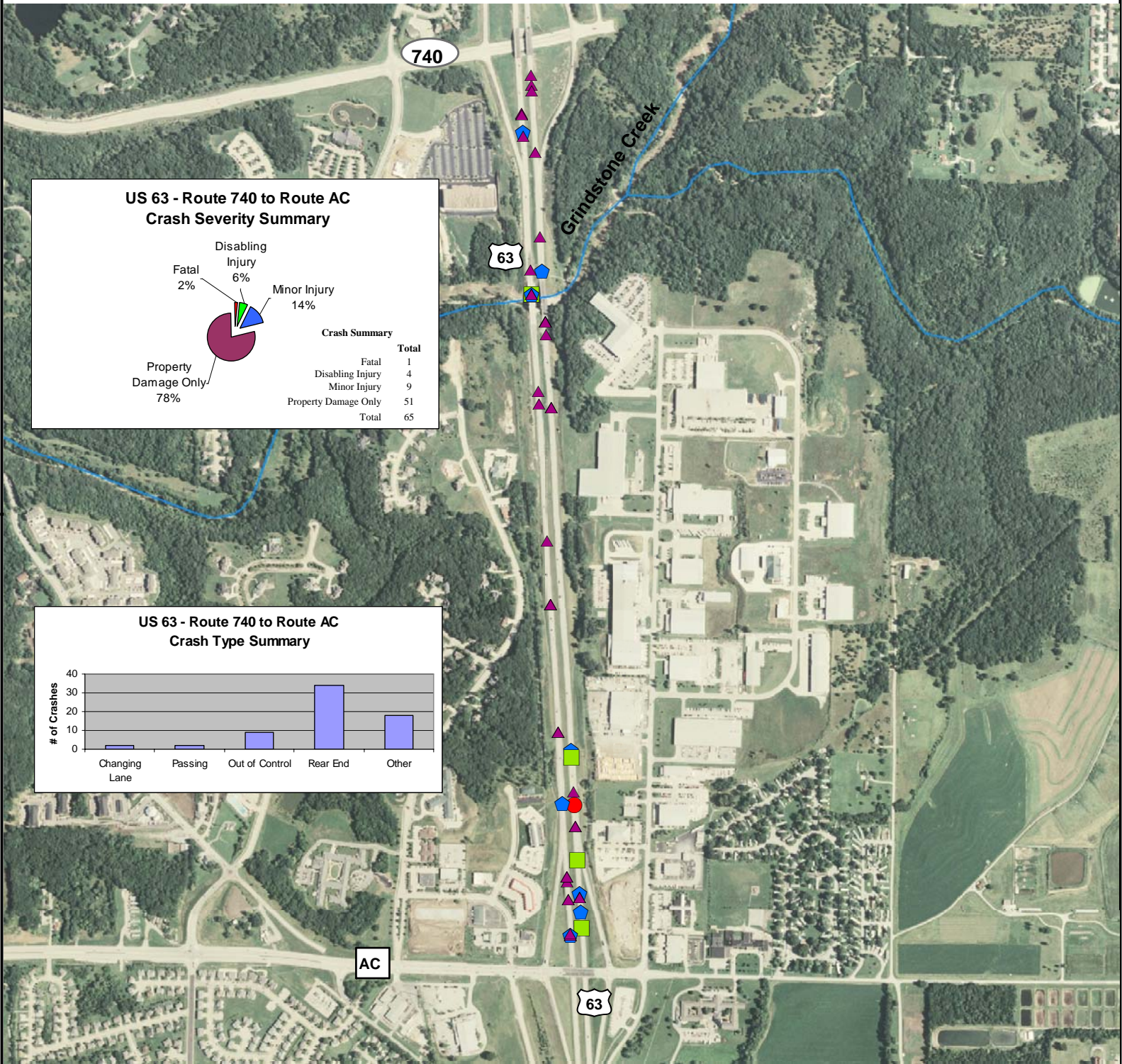
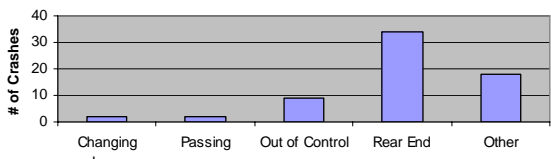
US 63 Crash Analysis Route 740 to Route AC (2001 - 2005)

**US 63 - Route 740 to Route AC
Crash Severity Summary**



Crash Summary		Total
Fatal	1	1
Disabling Injury	4	4
Minor Injury	9	9
Property Damage Only	51	51
Total		65

**US 63 - Route 740 to Route AC
Crash Type Summary**



- Fatal
- Disabling Injury
- ⬠ Minor Injury
- ▲ Property Damage Only
- Rivers, Streams, etc

