



KEEPING THE COMMUNITY INFORMED

Project Update

This issue provides an update on the East Columbia EIS and invites you to a public hearing on Thursday, April 30, 2009, 4 to 7 pm, at the Elk's Lodge.

Newsletter No. 3 | April 2009

CONTACT INFORMATION:

Missouri Department of Transportation

Mike Dusenberg,
Planning Manager
Phone: 1-888-ASK-MoDOT
(275-6636)

E-mail: michael.dusenberg@modot.mo.gov

City of Columbia, Missouri

John Glascock,
Public Works Director
Phone: 573-874-7250

E-mail: jdglasco@gocolumbiamo.com

Boone County, Missouri

Thad Yonke,
Senior Planner
Phone: 573 886-4330

E-mail: tyonke@boonecountymo.org

CH2M HILL

Buddy Desai,
Project Manager
Phone: 314-335-3011

E-mail: buddy.desai@ch2m.com

Web site

www.EastColumbiaEIS.com

E-mail

EastColumbiaEIS@ch2m.com

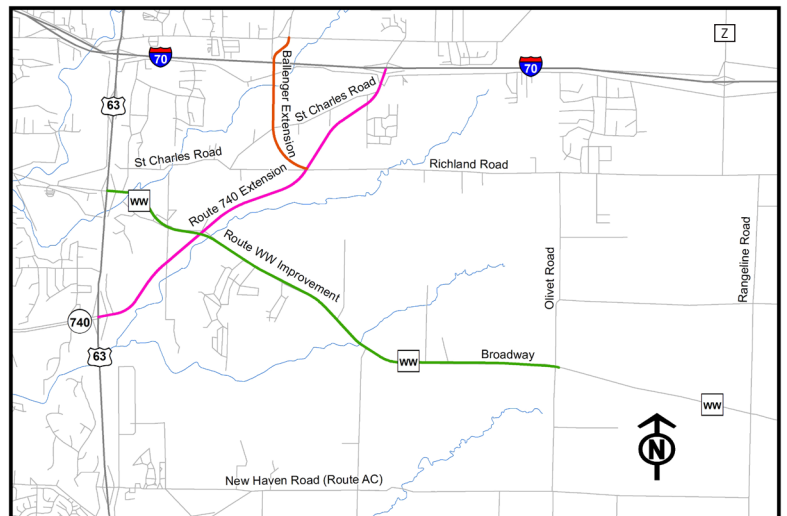
East Columbia Public Hearing Scheduled

Public Comments Encouraged About Draft Environmental Impact Statement

A public hearing for persons to review and comment on the Draft Environmental Impact Statement (EIS) that describes how the Missouri Department of Transportation (MoDOT), City of Columbia and Boone County could improve transportation in the rapidly growing area in East Columbia will be held from 4 to 7 p.m. at the Elk's Lodge, 4747 East Elk Park Drive at Highway WW on Thursday, April 30, 2009. The hearing will be conducted in an open-house format to enable people to come and go as needed.

The Draft EIS is a detailed document that evaluates if and how proposed roadway improvements in the area between Interstate 70 south to New Haven Road, and U.S.

Highway 63 east to State Highway Z, could impact the natural and man-made environment. The Draft EIS identifies formal project goals and contains summaries and other technical appendices needed to describe the project. MoDOT, the City of Columbia, Boone County and the study team want the public to understand the various elements considered during the study so they will know how the project's preferred alternative was determined.



Study area with elements of the Preferred Alternative highlighted

An open-house public hearing is part of the review and comment period that opened on April 3, 2009 and closes on May 18, 2009. Public hearing materials and the ability to comment will also be available online April 30, 2009 through May 18, 2009 at www.EastColumbiaEIS.com. Written comments will be accepted between April 3, 2009 and May 18, 2009 at: East Columbia EIS, 1034 South Brentwood Boulevard., Suite 2300, St. Louis, MO 63117.

The public hearing facility is wheelchair accessible. People with special needs covered in the Americans with Disabilities Act should notify the Department of Transportation, Central District, P.O. Box 718, Jefferson City, MO 65102, phone 1-888-ASK-MoDOT (275-6636), or the Missouri Relay System, TTY 1-800-735-2966 at least five working days prior to the meeting.

The public hearing facility is wheelchair accessible. People with special needs covered in the Americans with Disabilities Act should notify the Department of Transportation, Central District, P.O. Box 718, Jefferson City, MO 65102, phone 1-888-ASK-MoDOT (275-6636), or the Missouri Relay System, TTY 1-800-735-2966 at least five working days prior to the meeting.



CH2MHILL

1034 South Brentwood Blvd.
Suite 2300
St. Louis, MO 63117

**Please join us at the public hearing
to review and comment on the
Draft Environmental Impact Statement on:**

Thursday, April 30, 2009

4 P.M. - 7 P.M.

Elk's Lodge

**4747 East Elks Drive, at Highway WW
Columbia, MO 65201**

Public Involvement is Key to the Project's Success

The public continues to play a very important role in the project. More than 400 people attended the three public meetings and one drop-in center held between September 2006 and January 2008. In addition, the study team has received numerous written and e-mailed comments.

We encourage you to stay involved by attending the public hearing and/or reviewing the materials online, as your comments are extremely valuable to the study team.

What's Next

Following public review, revisions will be made to the Draft EIS and the Final EIS will be prepared and submitted to Federal Highway Administration (FHWA) for approval. The Final EIS will have a 30-day comment period and copies will be available for review on the project Web site and at other public locations. Following this comment period, the FHWA will issue a Record of Decision. After FHWA issues the Record of Decision, the Missouri Highways and Transportation Commission can approve the selected alternative and MoDOT, the City of Columbia and Boone County will be able to move forward with the project whenever funding becomes available.

The Draft East Columbia EIS is available online at www.EastColumbiaEIS.com and is also available at the following public viewing locations:

- MoDOT Central District 5 Office
1511 Missouri Blvd
Jefferson City, Missouri 65109
- City of Columbia, City Hall
701 East Broadway
Columbia, Missouri 65201
- Columbia Area Transportation Study
Organization, City Hall
701 East Broadway
Columbia, Missouri 65201
- Columbia Chamber of Commerce
300 South Providence Road
Columbia, Missouri 65203
- Boone County Government Center
801 East Walnut, Room 210
Columbia, Missouri 65201
- Columbia Public Library
100 West Broadway
Columbia, Missouri 65203
- Mid-Missouri Regional Planning Commission
206 East Broadway
Ashland, Missouri 65010