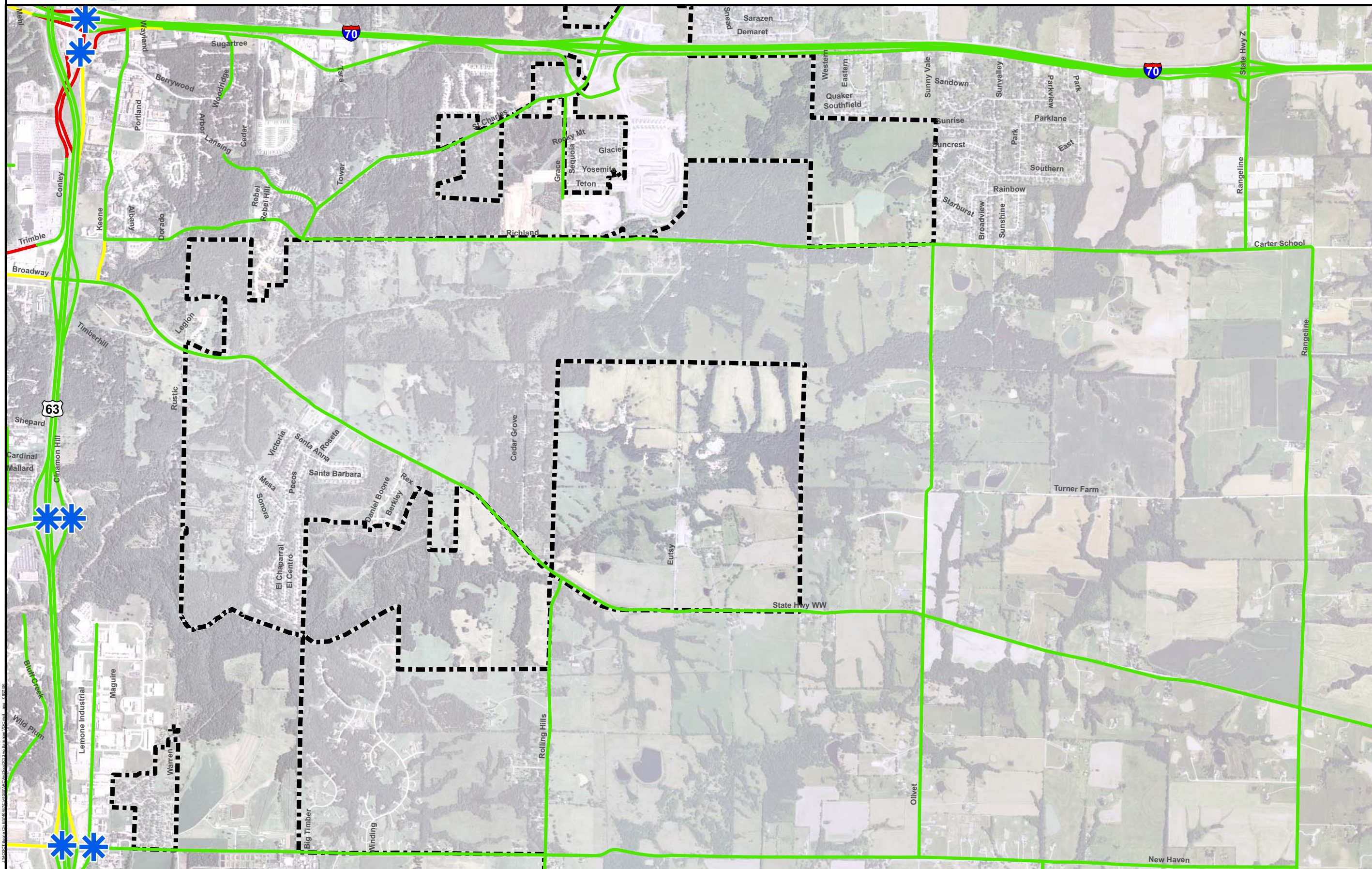
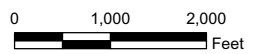




TRAFFIC CONGESTION - YEAR 2005



Notes:
The level of congestion on a road is measured as the ratio of traffic volume to the roadway's capacity. This map shows the level of congestion along road segments in the study area for the year 2005. Heavily congested intersections also are identified by an asterisk.



Legend

Degree of Congestion

- LOW
- MEDIUM
- HIGH
- County
- City Limits
- * Congested Intersection



East Columbia EIS
City of Columbia
Boone County / MODOT

Traffic Congestion - Year 2005