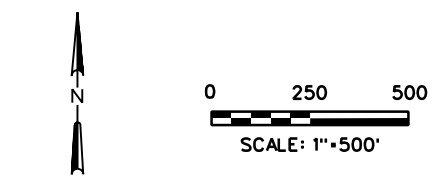


Comparison of Nickel Concentrations in Surface Sediment Samples from Off-Base Reference Areas to the NOAA Effects-Range-Median Screening Level

| Chemical | NOAA ERM Screening Level | Reference Area | | |
|----------|--------------------------|----------------|-------------|-------------|
| | | REF-SD001 | REF-SD002 | REF-SD003 |
| Nickel | 51.6 | 78.5 | 69.8 | 45.8 |

Notes:
 Bold indicates that the concentration exceeds the ERM.
 NOAA ERM = National Oceanic and Atmospheric Administration effects-range-median.



LEGEND:
 ● Surface water /Sediment / Fish tissue sampling locations

All concentrations are in milligrams per kilogram.

Figure 4-4
Chemicals in Surface Sediments at Concentrations Greater Than NOAA Effects-Range-Median Screening Levels
 Bellows AFS OU1 EE/CA