

Legend

- Existing Monitoring Wells*
- Approximate AOC 18 and Site LF01 Boundaries
- Access Road
- Roads
- Surface Water

Notes:
 * Monitoring well AOC18-001 is planned for removal in late 2004.

Site LF01 Boundary Source: Updated Preliminary Draft Revised EE/CA Report for Site LF01, OU1, Bellows AFS (CH2M HILL, October 11, 2002).

AOC 18 Boundary Source: SI Report for AOCs 18, 20, and 21, Bellows AFS (CH2M HILL, May 9, 2003).

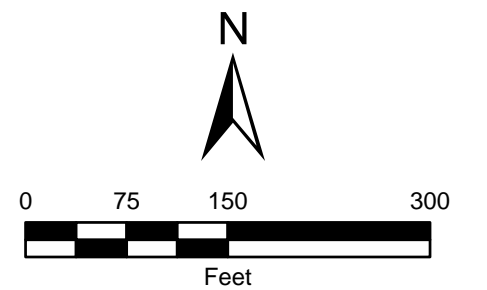
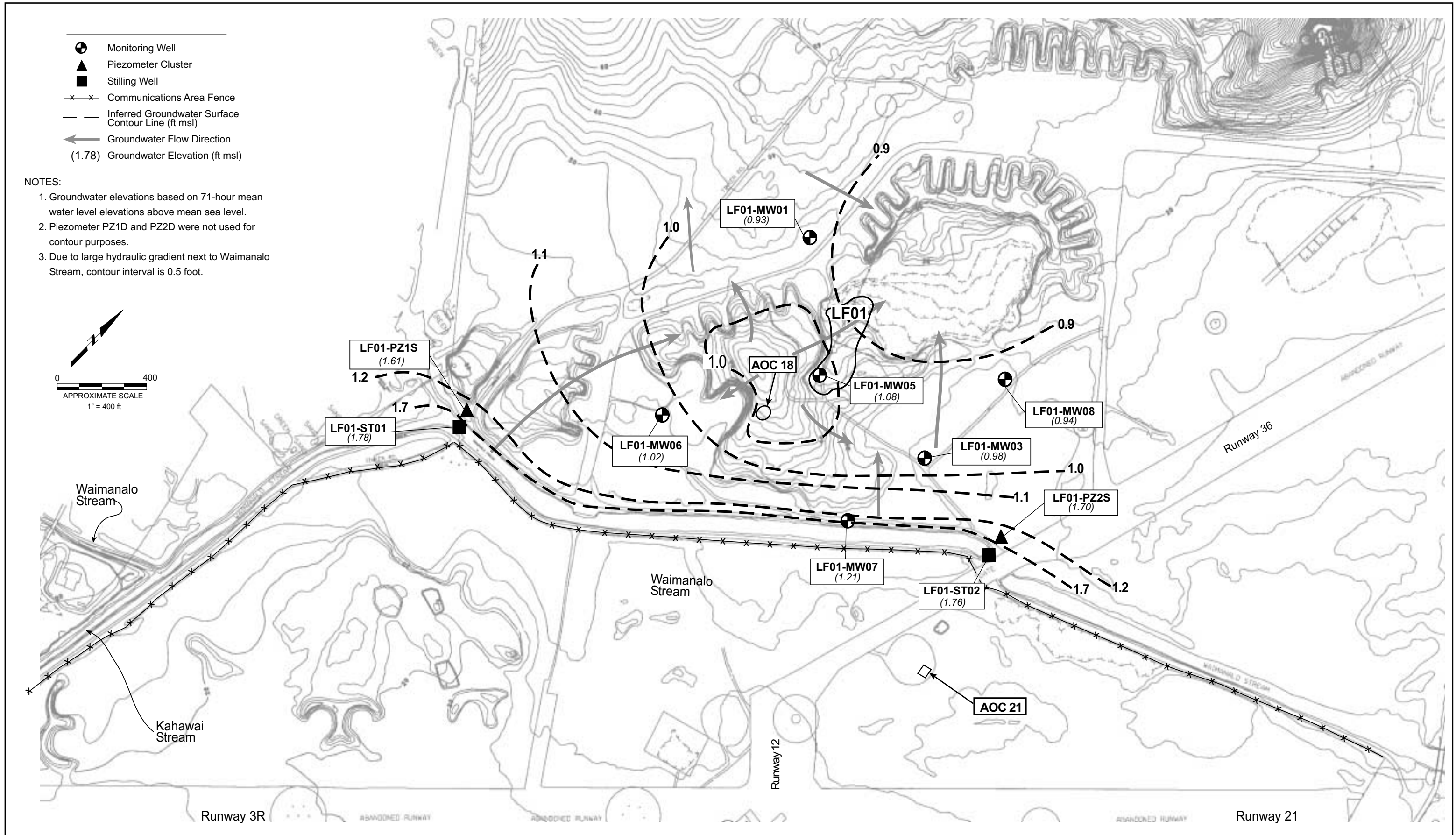
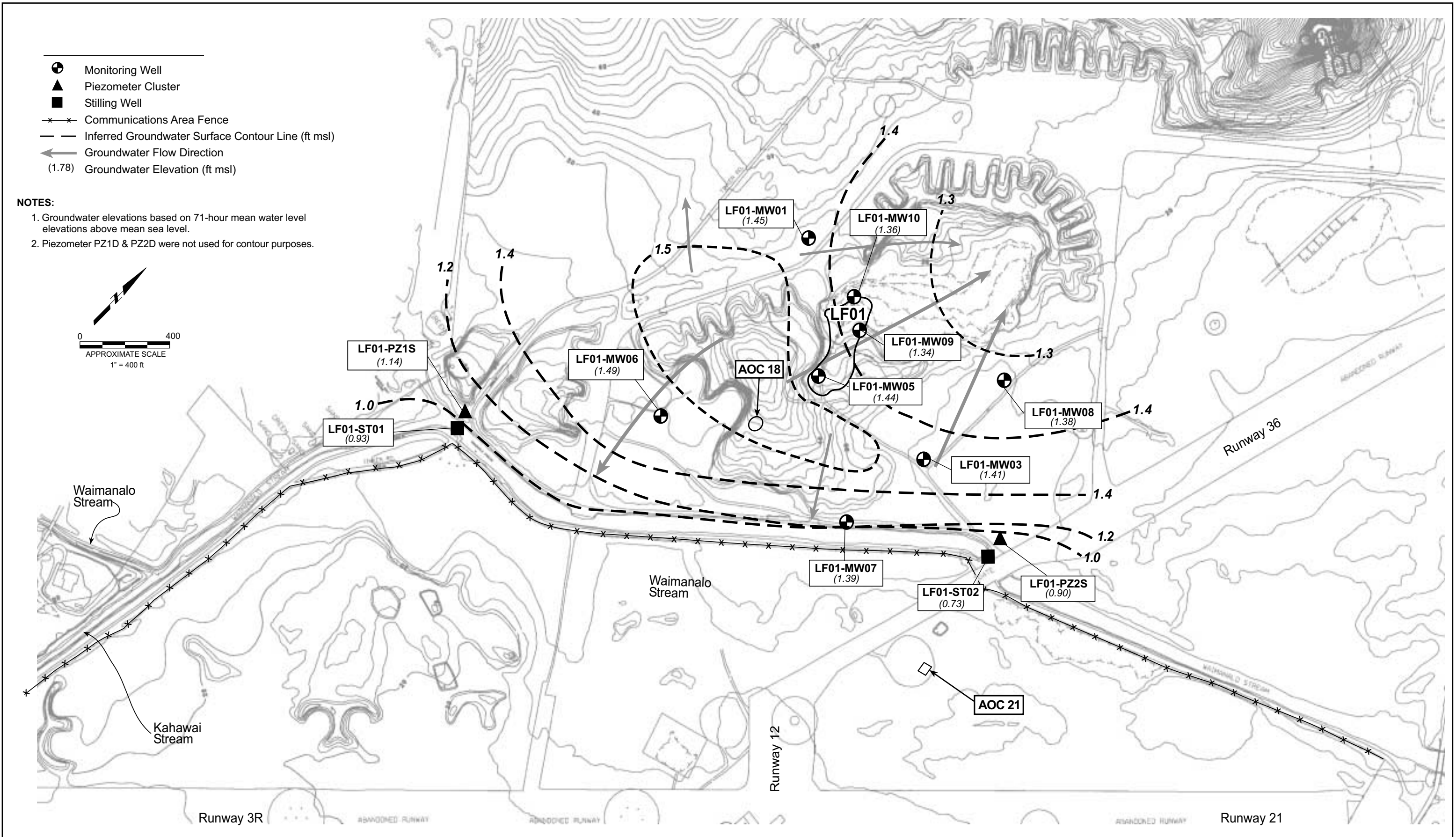


Figure 2-1
Site LF01, AOC 18 and Vicinity
 WORK PLAN FOR FS AT SITES LF01, LF23, LF24, AND AOC18, BELLOWS AFS AND MCTAB



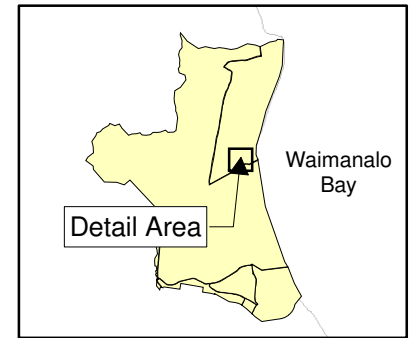
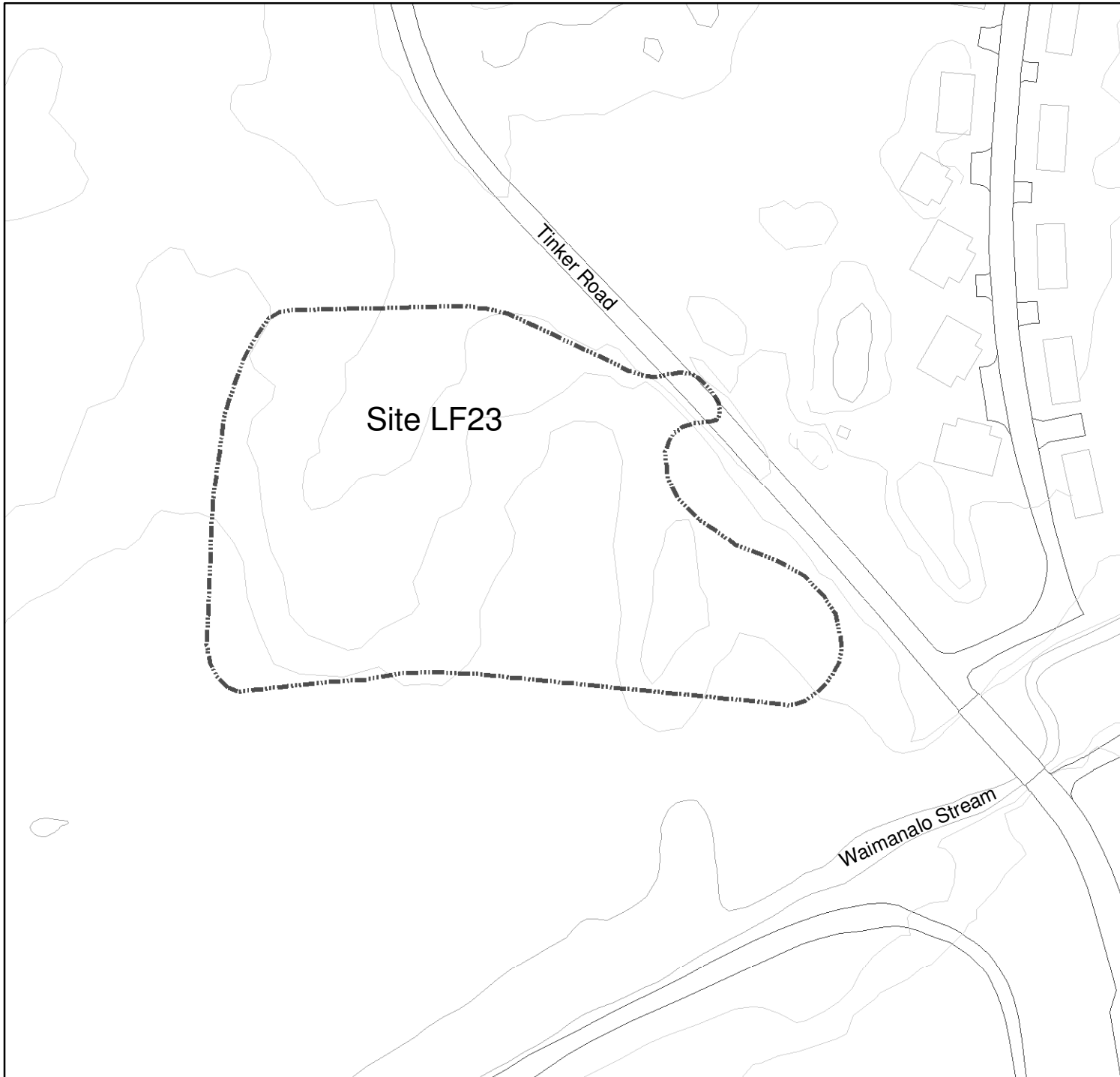
Source: SI Report for AOCs 18, 20, and 21, Bellows AFS (CH2M HILL, May 9, 2003)

Figure 2-2
 Site LF01 and AOC 18
 Upper Aquifer Groundwater Contour Map,
 Dry Season
 WORK PLAN FOR FS AT SITES LF01, LF23, LF24,
 AND AOC 18, BELLOWS AFS AND MCTAB







Source: SI Report for AOCs 18, 20, and 21, Bellows AFS (CH2M HILL, May 9, 2003)

Figure 2-3
 Site LF01 and AOC 18
 Upper Aquifer Groundwater Contour Map,
 Wet Season
 WORK PLAN FOR FS AT SITES LF01, LF23, LF24,
 AND AOC 18, BELLOWS AFS AND MCTAB



Legend

-  Approximate Site LF23 Boundary
-  Roads
-  Surface Water
-  Building

Site LF23 Boundary Source:
Draft Final PA/SI Report,
Bellows AFS (EA, July 1996)

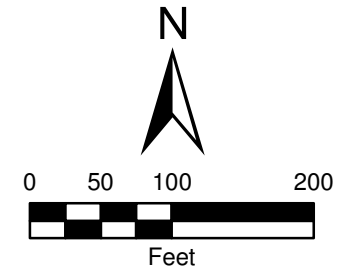
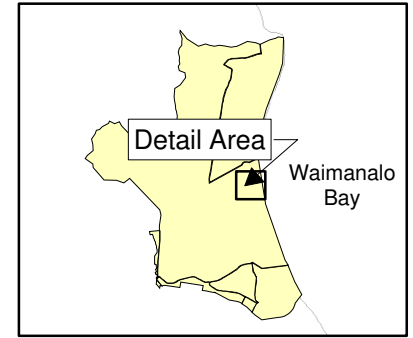
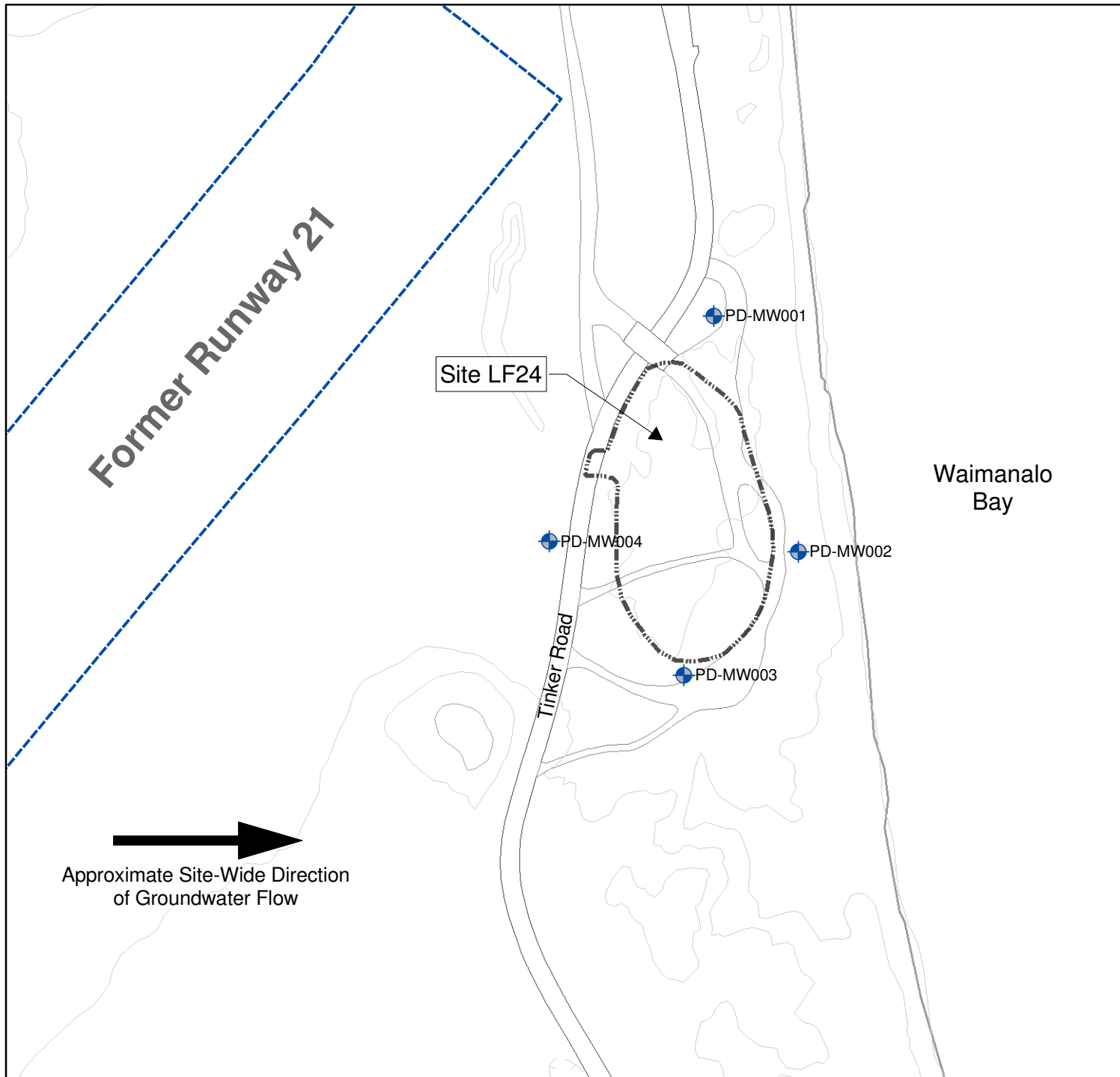

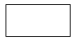






Figure 2-4
Site LF23 and Vicinity
WORK PLAN FOR FS AT SITES LF01, LF23,
LF24, AND AOC18,
BELLOWS AFS AND MCTAB



Legend

-  Approximate Extent of Buried Debris
-  Paved Road
-  Unpaved Road
-  Former Runway
-  Surface Water
-  Existing Monitoring Wells

Site LF24 Boundary Source:
RSE Report, Pier Dump Site (LF24),
Bellows AFS (CH2M HILL, June 1, 2004)

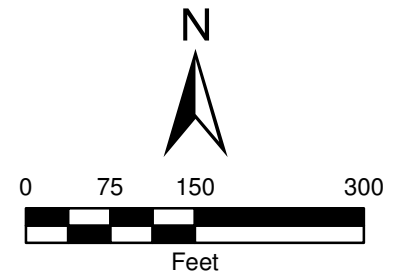


Figure 2-5
Site LF24 and Vicinity
WORK PLAN FOR FS AT SITES LF01, LF23,
LF24, AND AOC18,
BELLOWS AFS AND MCTAB