

PUBLIC PARTICIPATION



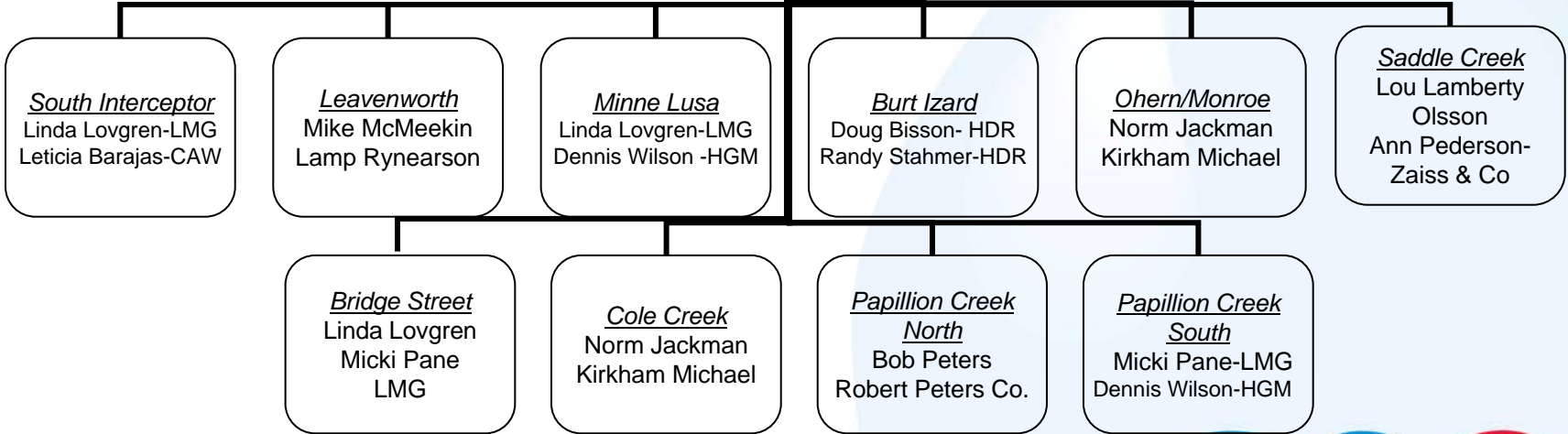
CSO!
Clean Solutions for Omaha

The logo features the text "CSO!" in a bold, sans-serif font. The "CS" is blue, the "O" is red, and the exclamation point is blue. A small blue water drop is positioned at the bottom of the exclamation point. Below the logo, the text "Clean Solutions for Omaha" is written in a smaller, blue, sans-serif font. The entire logo is set against a large, light blue water drop background that occupies the right side of the slide.

CITY OF OMAHA
*Public Works
Department*
Marty Grate

Project Manager
Tom Heinemann
CH2MHill

Public Participation
Facilitator
Linda Lovgren



STAKEHOLDER PARTICIPATION

- Working knowledge of the impacted area
- Communicating your thoughts, ideas and concerns to the project consultants



STAKEHOLDER PARTICIPATION

- Help to identify and implement the best public participation methods
- Keep the lines of communication open as the project progresses



STAKEHOLDER PARTICIPATION

- Serve as communications leader
- Participate in the use of the decision tool as needed
- Provide leadership for solution based projects



The 3 P's

- The **p**ublic **p**articipation **p**rocess
 - Formation of the Basin Advisory Panels
 - Basin specific
 - Neighborhood focus
 - Solutions orientated



The 3 P's

- The **p**ublic **p**articipation **p**rocess
 - Formation of the Community Basin Panel
 - Vision specific
 - Quality of outcomes for a “big picture” perspective
 - Opportunity focused
 - Solutions oriented



Participation Education Tools

- External Web Site
 - www.omahaCSO.com
 - Basin maps
 - Copies of presentations
 - Contact email



Participation Education Tools

- Utility inserts
- PowerPoint Presentations
- Informational Brochure
- Basin-wide town halls
- Community-wide town halls



Participation Education Tools

- Door hangers
- Speakers for meetings
- Library centers



Public Participation Schedule

- Workshop Meeting - 2
 - November 9, 2006
- Workshop Meeting – 3
 - December 5, 2006



Public Participation Schedule

- Basin Advisory Panel Orientation
 - October 2006
- Community Basin Panel
 - October 2006



THANK YOU

A large, light blue water drop graphic is positioned on the right side of the slide. Inside the drop, there is a smaller, more detailed water drop with a white highlight and a blue shadow. The logo for CSO! is located in the bottom right corner of the slide, partially overlapping the large water drop. The letters 'CSO!' are in a bold, sans-serif font. 'C', 'S', and the first 'O' are blue, while the second 'O' and the exclamation point are red. Below the logo, the text 'Clean Solutions for Omaha' is written in a smaller, blue, sans-serif font.

CSO!
Clean Solutions for Omaha