



**YOU'RE INVITED TO THE SR 528 PD&E STUDY – VIABLE ALTERNATIVES PUBLIC WORKSHOP**

The Florida Department of Transportation invites you to participate in the second Public Workshop for the SR 528 Project Development and Environment (PD&E) Study. This public workshop will be held on Tuesday, June 28, 2005 from 5:30 p.m. to 8:00 p.m. at the Radisson Resort at the Port (Pavilion Room), 8701 Astronaut Blvd., Cape Canaveral, Florida. The Workshop will be conducted in an open house format with a brief presentation at 6:30 p.m.

The purpose of this workshop is to provide residents, business owners and other interested persons the opportunity to review new and updated project information and to provide input for the decision making process.

Maps, drawings and other study information will be on display at the workshop. Study representatives will be available during the workshop to discuss the study and answer questions. Your input is very important and we encourage you to come to the workshop and share your comments.

**PROJECT DETAILS**

**Study Limits**

From SR 520 to the Terminal B Interchange at Port Canaveral in Orange and Brevard Counties  
Approximately 23.5 miles in length

**Study Activities**

The initial roadway alignment, interchange concepts and typical cross-section options for the six-lane widening of SR 528 were presented at the November 2004 Public Workshop. These initial alternatives were further evaluated and refined to develop viable alternatives. The viable interchange alternatives and typical cross-sections will be presented to the public for review at the second Public Workshop on June 28, 2005. Stormwater treatment, including potential stormwater pond locations, will also be presented.

**Study Contact and Information**

We encourage you to participate in the SR 528 PD&E Study. Your input, along with the technical evaluations, will provide the basis for the final recommendations. To learn more about the study or to share your thoughts and ideas, please contact Melaina Petit, Public Involvement Coordinator, by:

Phone: (407) 423-0030  
 Toll Free: 1 (866) 893-9378  
 E-mail: mpetit@ch2m.com  
 Mail: Melaina Petit  
 CH2M HILL  
 225 E. Robinson St., Suite 505  
 Orlando, Florida 32801

**PROJECT LOCATION MAP**



**MEETING LOCATION MAP**



**Small Group Meetings**

We are available to meet with your group, neighborhood, or association. This interaction is very important to the overall success of the project. If you would like to schedule a meeting, please contact Melaina Petit as indicated above.

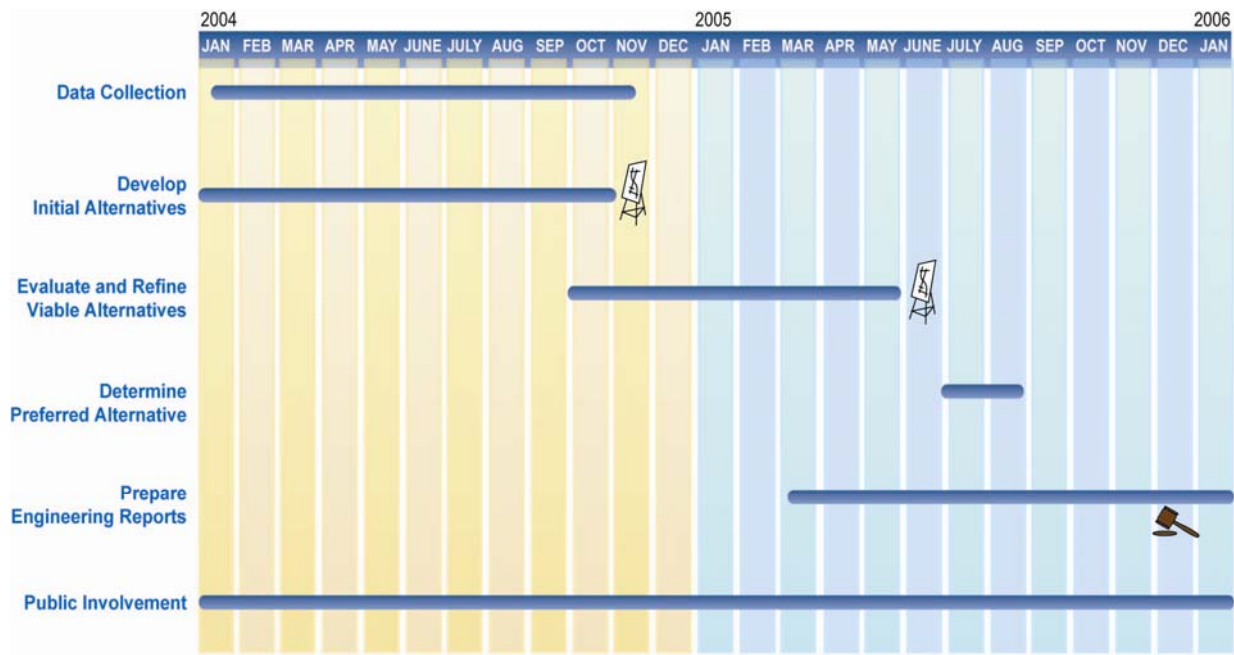


CHANGE SERVICE REQUESTED

CH2M HILL  
 225 E. Robinson Street  
 Suite 505  
 Orlando, FL 32801

### Study Schedule

The schedule shown here provides the highlights of the key events throughout the PD&E Study. Please note there will be a public hearing that is tentatively scheduled for Winter 2005.



This project schedule is intended to provide you with information of upcoming activities and events. These dates are subject to change.



Check Us Out on the Web!  
[www.sr528pde.com](http://www.sr528pde.com)