



**YOU'RE INVITED TO THE SR 528 PD&E STUDY – INITIAL ALTERNATIVES PUBLIC WORKSHOP**

The Florida Department of Transportation invites you to participate in the first Public Workshop for the SR 528 Project Development and Environment (PD&E) Study. This public workshop will be held on Wednesday, November 3, 2004, from 5:30 p.m. to 8:00 p.m. at Merritt Island High School, 100 Mustang Way, Merritt Island, Florida. The workshop will be conducted in an open house format with a brief presentation at 6:30 p.m.

The purpose of this workshop is to provide residents, business owners and other interested persons the opportunity to review project information and to provide input for the decision making process.

Maps, drawings and other study information will be on display at the workshop. Study representatives will be available during the workshop to discuss the study and answer questions. Your input is very important and we encourage you to come to the workshop and share your comments.

**PROJECT DETAILS**

**Study Limits:**

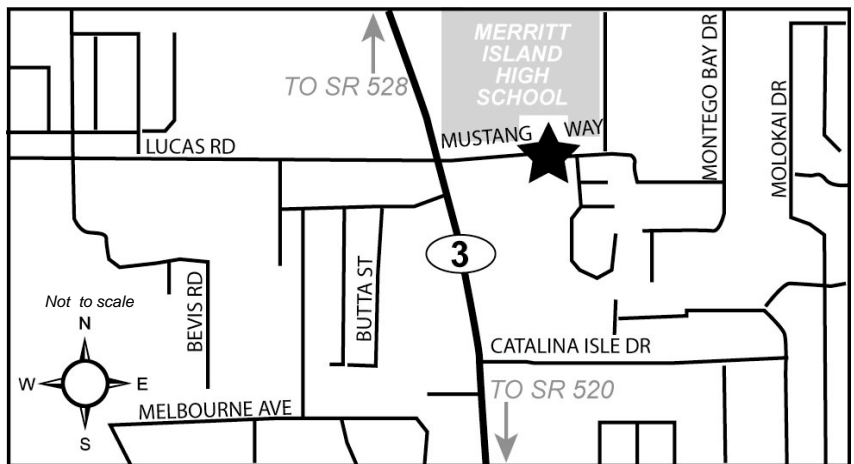
From SR 520 to the Terminal B Interchange at Port Canaveral in Orange and Brevard Counties  
Approximately 23.5 miles in length

**Study Contact and Information**

We encourage you to participate in the SR 528 PD&E Study. Your input, along with the technical evaluations, will provide the basis for the final recommendations. To learn more about the study or to share your thoughts and ideas, please contact Melaina Petit, Public Involvement Coordinator, by:

Phone: (407) 423-0030  
Toll Free: 1 (866) 893-9378  
E-mail: [mpetit@ch2m.com](mailto:mpetit@ch2m.com)  
Mail: Melaina Petit  
CH2M HILL  
225 E. Robinson St., Suite 505  
Orlando, Florida 32801

Melaina Petit may be contacted by anyone needing study or workshop information or requests for special accommodations under the Americans With Disabilities Act of 1990. Special accommodation requests under the Americans With Disabilities Act should be Made at least seven (7) days prior to the workshop.



**Small Group Meetings**

We are available to meet with your group, neighborhood, or association. This interaction is very important to the overall success of the project. If you would like to schedule a meeting, please contact Melaina Petit as indicated above.

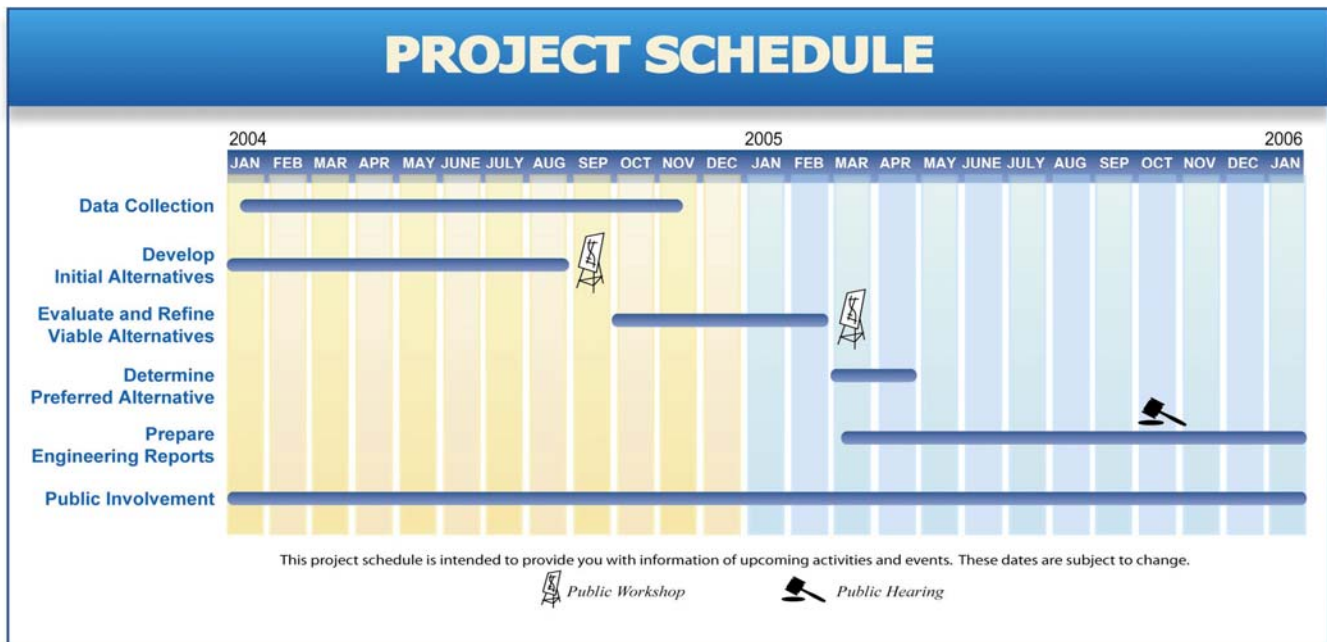


CHANGE SERVICE REQUESTED

CH2M HILL  
225 E. Robinson Street  
Suite 505  
Orlando, FL 32801

### Study Schedule

The schedule shown here provides the highlights of the key events throughout the PD&E Study. Please note there will be a second workshop and a public hearing that is tentatively scheduled for Winter 2005.



Check Us Out on the Web!  
[www.sr528pde.com](http://www.sr528pde.com)